

GENDEX

Orthoralix® 9200 Series

Panoramic X-ray



- Superior image quality
- Wide range of projections
- Simple patient positioning

Panoramic X-ray

GENDEX

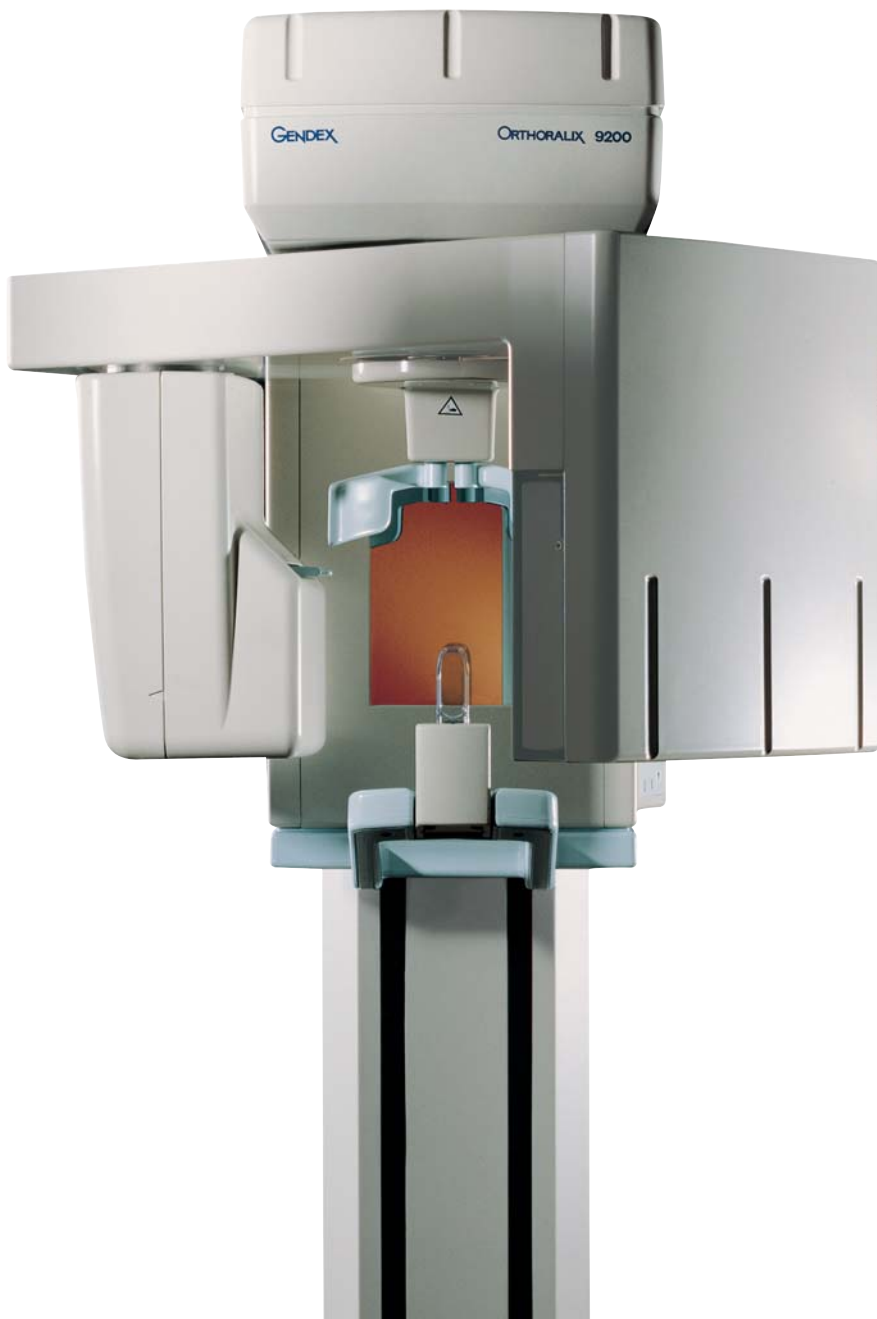
Orthoralix® 9200 Series

Accurate patient positioning

The patient positioning procedure, using an efficient triple laser beam system and a fully motorized and highly accurate positioning mechanism, assures maximum precision in patient

positioning, even under the most difficult conditions. Required operator intervention is reduced to a minimum, with the patient stationary in a comfortable standing position.

All the positioning tools combine simplicity, reliability and accuracy. Special tools are provided for more complex projections, such as the Transcan and TMJ Programs.



Operator flexibility

Three technical factor setting modes are available to ensure complete operator flexibility. Manual mode for total operation control; use of preset technical factors, (each customizable by the operator) and the AEC mode (Automatic Exposure Control).

The correct choice of technical factors is now even easier with the AEC.



Real time correction

Relevant patient morphology APR, (Automatic Profile Recognition), is automatically recognized through an advanced electronic sensor, thus making real-time correction to ensure optimum balance between contrast and image blackening.

This important feature is also available for all cephalometric projections.



Enhanced control panel

The easy to read, microprocessor enhanced control panel combines simple and logical graphic indications and an LCD display to show the used technical factors (kV, mA, s) and positioning references (mm) for the maximum exam reproducibility. The ergonomic design makes cleaning easy and effective.



Orthoralix® 9200 Series

Basic panoramic radiology programs

Standard panoramic projection

This is the most common routine examination reproducing the whole dento-maxillofacial region including the temporomandibular joints (TMJs), and rendering the best compromise between deviation from ideal orthogonality, depth of the focal trough and artifact suppression.

Child projection

The specific trajectories of the overhead movement guarantee a perfect adaptation to the child's morphology. Though still covering the whole maxillofacial complex, including TMJs, the occurrences of the X-rays has a minimum deviation with respect to true orthogonality with practically no overlapping of crowns in the premolar region.

Orthogonal dentition

The optimized imaging geometry presents a sharp and undistorted view, limited to the dentition.

Orthogonal half-panoramic

This view, geometrically different than the standard panoramic and with performance similar to the orthogonal dentition, ensures maximum patient dose reduction, artifact suppression and is free of redundant shadows from the spinal cord.

Lateral views of the TMJ

Projections along the major condylar axes are produced for an accurate examination of the base and section of each joint. Both open or closed mouth views are possible, and can be shown on the same film.





Standard panoramic



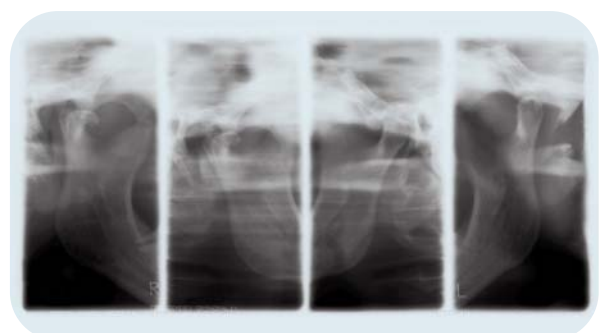
Child projection



Orthogonal dentition



Orthogonal half-panoramic



Lateral views of the TMJ

Orthoralix® 9200 Series

DMF option – specialized programs for dento-maxillo-facial radiology

Frontal TMJ

The postero-anterior view of the joints provides specific radiographic projections, useful for the detailed investigation of the patient's morphology. Frontal views, as a natural complement to the lateral views, are considered to have significant diagnostic value. The use of the exclusive cephalostat is recommended to ensure precise and reproducible examinations of the joints.

Front view of the maxillary sinuses

The projection shows a postero-anterior view of the maxillary sinuses. The image layer position can be determined by the user.

Lateral maxillary sinuses

This complementary projection to the front view is made on an ample cross section at the nasal sinus in right or left latero-lateral projection.

Half orthogonal dentition

This orthogonal view of the right or left half of the dental arch is designed to be shown on the same film together with the appropriate Transcan projection.

Frontal dentition

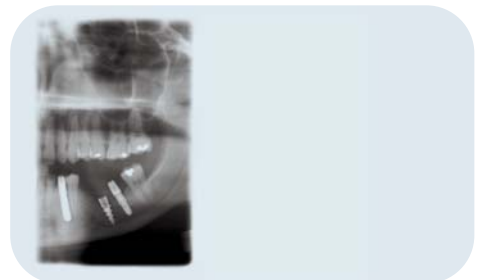
This anterior view presents a projection of the frontal elements with a deeper focal layer than a standard panoramic. Recommended for use on patients with malocclusions and/or during orthodontic treatment.



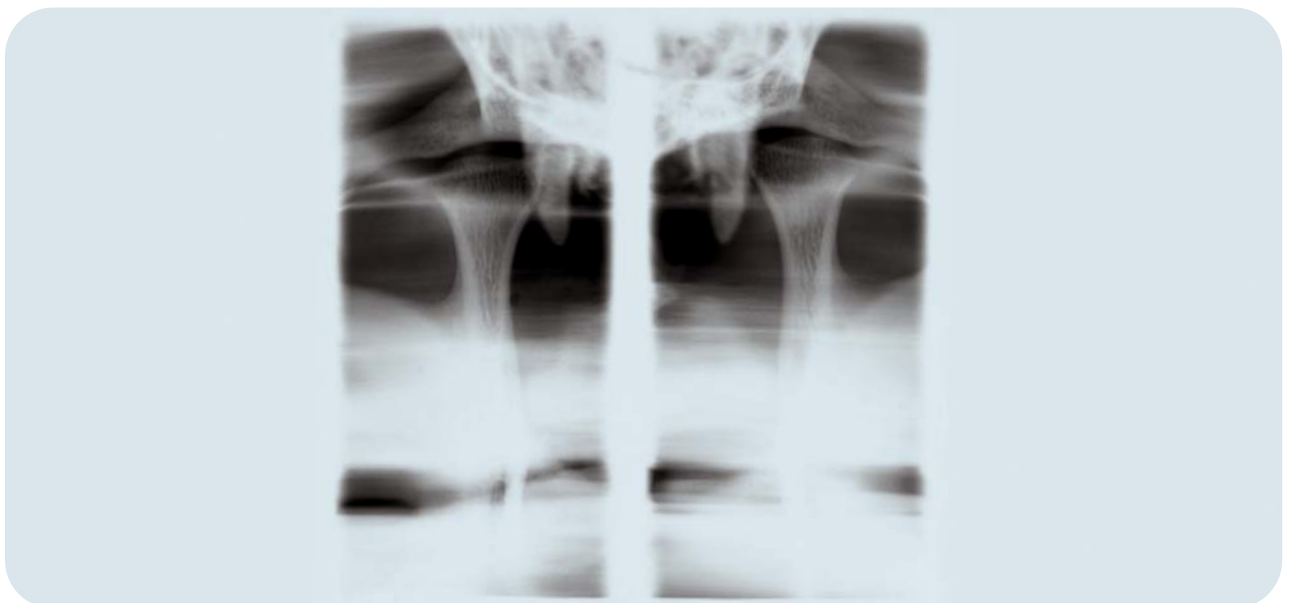
Frontal sinus



Lateral sinus



Half orthogonal

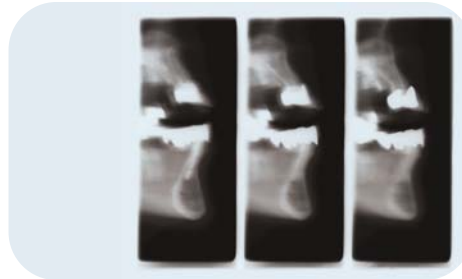


Frontal TMJ

Transcan implantology option

These projections offer three transverse cross-sections of upper and lower jaw at 7mm intervals. The foundation for reliable and precise implant planning consists of a choice from different focal layers of either 3mm or 6mm (8mm on digital version) and the ability to show the right or left dental arch on the same image as the appropriate Transcan projection.

To grant reliable and reproducible patient positioning, a specifically designed positioning device is used in combination with the patient's dentition impression (previously obtained with the supplied trays and impression material).



Transcan



Transcan



Transcan



Transcan

Orthoralix® 9200 Series

Ceph option

Specially developed programs verify preset technical factors and are automatically corrected according to patient morphology during exposure.

Following views are possible:

Latero-Lateral (LL)

Antero-Posterior (AP)

Postero-Anterior (PA)

Submento-Vertex (SV)

Carpo

Common magnification factor is for all projections 1.1.

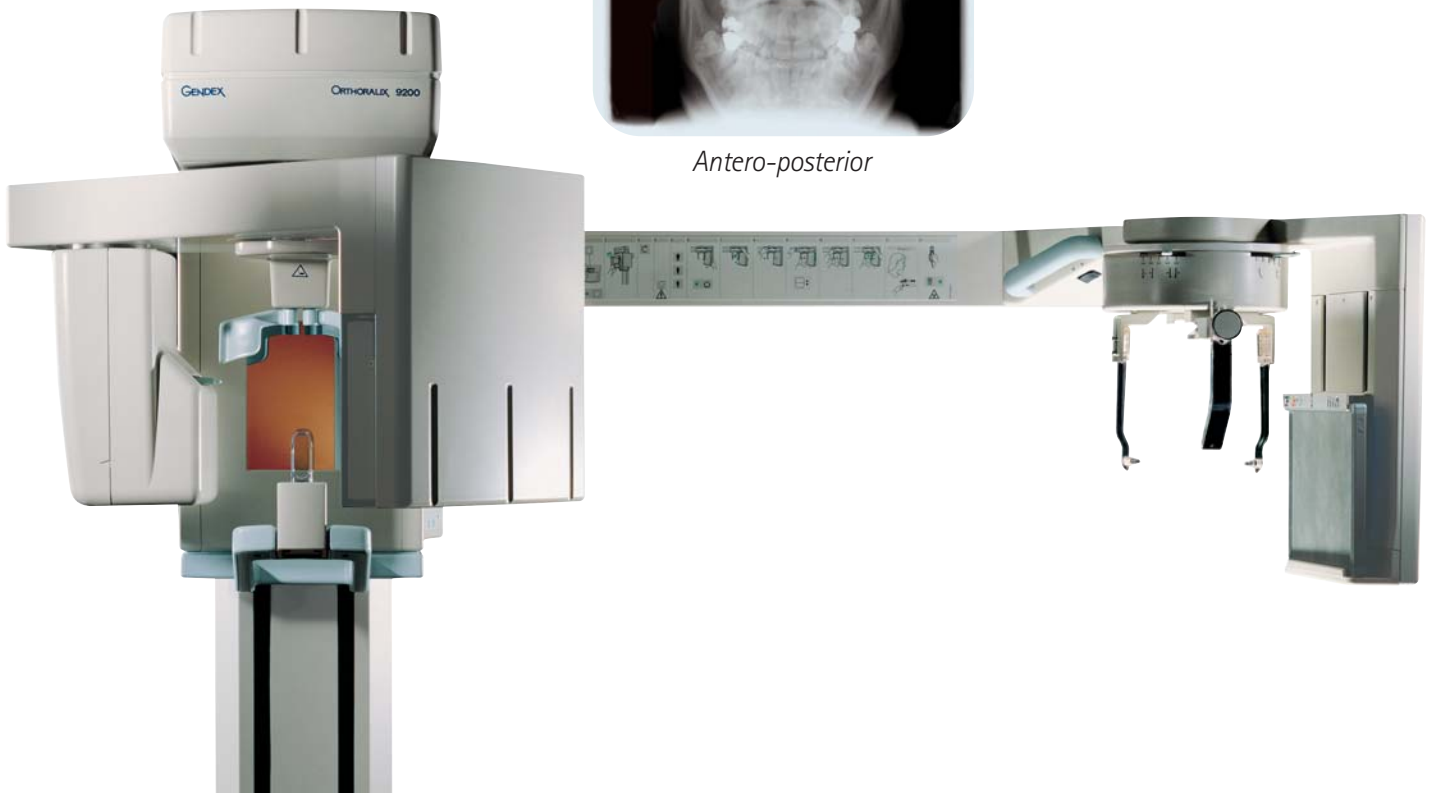
For the latero-lateral view a special precision soft tissue filter is supplied, which easily adapts to any patient's facial profile.



Latero-lateral



Antero-posterior



Digital solutions – the future is already here

With a long tradition of innovation, Gendex offers more choices in digital imaging solutions.

With the introduction of the new digital panoramic system using the latest generation CCD sensor, the Orthoralix family is now complete. The Orthoralix 9200 DDE is easily connected to a computer through a cable and the image is instantly available on the monitor screen.

All panoramic and dento-maxillofacial projections are captured in real time for immediate patient positioning control.



DenOptix integration

The Orthoralix 9200 AEC⁺ can also be used along with the highly successful DenOptix[®] system. Featuring reusable phosphor plates, DenOptix allows the digital capture and display of all size intraoral, panoramic, and cephalometric images.

With DenOptix, you can upgrade to digital without modifying your existing panoramic unit.



With highly rated technical service and an extensive distribution network, Gendex offers you a complete digital support solution.

Orthoralix® 9200 DDE

Market leading digital performance

Once again, Gendex innovation delivers a product platform that anticipates the growing needs of your practice. The Orthoralix 9200 DDE combines the recognized advance imaging technology of Orthoralix 9200 with the latest generation of CCD sensor, all at a cost that leaves higher-priced competition out of the picture.

At the core of our advanced system is the new sensor module, replacing the traditional film cassette and elimi-

nating the expense and hassle of a processor, film and chemicals. The Orthoralix 9200 DDE can operate as a dedicated workstation, or can easily integrate with your existing office network with its unique Ethernet connection.

The Orthoralix 9200 DDE includes basic panoramic projections, as well as advance programs to satisfy the demanding needs of dental specialists. The optional Transcan

cross-sectional program adds a tool for reliable and precise implant positioning.

An intuitive control panel and easy-to-read LCD display showing technical factors (kV, mA, s), ensure a perfect image every time.



Key features

State-of-the-art Sensor

Advanced CCD technology and sophisticated imaging electronics, housed in the compact sensor module, produce superior Gendex image quality.

Highly Accurate Patient Positioning

The Orthoralix 9200 DDE features three laser positioning beams and a fingertip-controlled motorized column and three-point patient positioning support.

Unsurpassed Image Quality

The AEC system makes it simple to perform real-time connections of technical factors, ensuring optimum image contrast and balance. The unit also includes five cephalometric programs with a microprocessor-controlled soft-tissue filter.



Imaging programs

Panoramic Projections

- Child Panoramic
- Lateral TMJ – open mouth
- Lateral TMJ – closed mouth
- Orthogonal Dentition
- Left/right Orthogonal Half-Pan
- Frontal Dentition
- Frontal Sinus
- Left/Right Lateral Sinus
- Frontal TMJ
- Optional Transcan

Ceph Projections

- Latero-Lateral
- Antero-Posterior
- Postero-Anterior
- Submento-Vertex
- Carp0

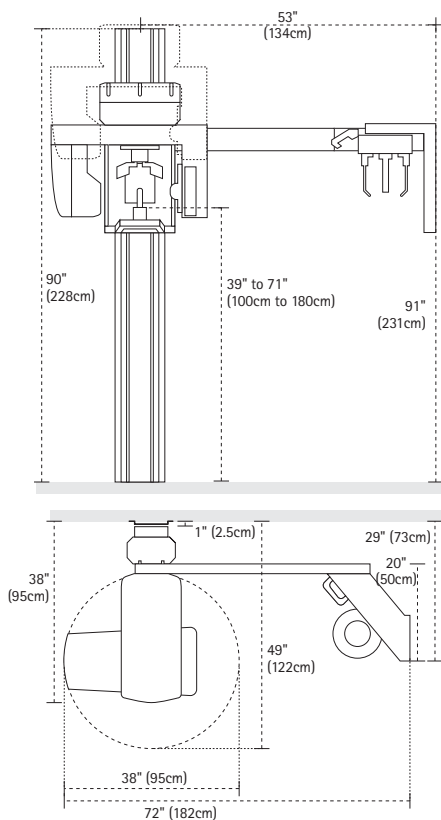


Technical Specifications

9200 AEC+

Power supply voltage:	115 - 250 Vac, 48 - 62 Hz
Max. line power rating:	10 A at 250 V, 15 A at 115 V
Focal spot:	0.5 according with IEC 336 (1993)
Anode voltage:	60 - 84 kV
Anode current:	3 - 15 mA
Exposure time:	12 s for standard panoramic; 0.16 - 2.5 s for cephalography
Panoramic cassette:	6" x 12" with Lanex medium screens
Cephalography cassette:	8" x 10" with Lanex regular screens
Vertical reach:	39" to 71" (from floor to occlusal plane)
Weight:	467 lbs with cephalometric arm 410 lbs in base version

Installation requirements



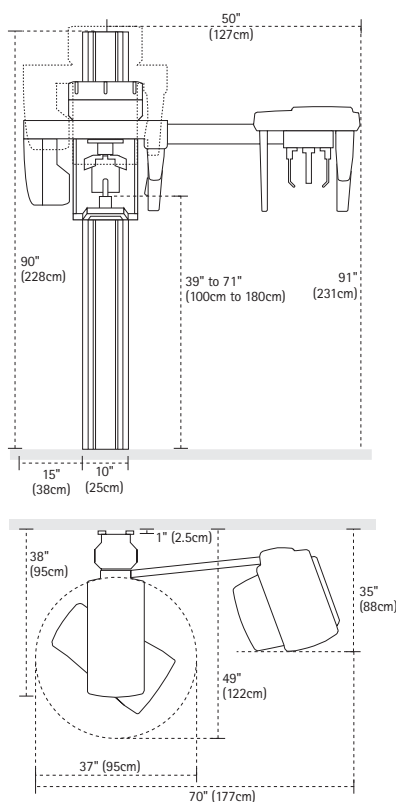
9200 DDE

Power supply voltage:	115 - 250 Vac, $\pm 10\%$
Frequency:	50 / 60 Hz ± 2 Hz
Max. line power rating:	10A at 250V, 15A at 115V
Anode voltage:	60-84 kV
Anode current:	3-15 mA
Duty factor:	1:20 at full power operation
Focal spot:	0.5 according with IEC 336 (1993)
Pixel size:	48 μ m
Resolution:	10.4 lp/mm
Active area PAN sensor :	146x6 mm
Active area CEPH sensor:	220x6 mm
Image size:	1536x2725 pixel (PAN) 2304x2529 pixel (CEPH - MAX)

PC requirements

CPU:	Pentium II, 400 MHz or superior
RAM:	256 MB minimum
Operating system:	Windows 98/2000/XP

Installation requirements



www.gendex.com



Gendex. Imaging Excellence.

KaVo Dental
Gendex Dental Systems

340 E. Main Street
Lake Zurich, IL 60047
1.888.275.5286
Fax 1.847.550.1322